



Webhosting and Database Configuration Manual



Part I: Introduction

This manual uses www.isp.com.et for demonstration purpose. While using this document for configuring your webhosting and database, you should use the domain name provided to you from ethiotelecom.

Part II: Prerequisite

Before starting to configure your webhosting and database service, make sure that you have the following:

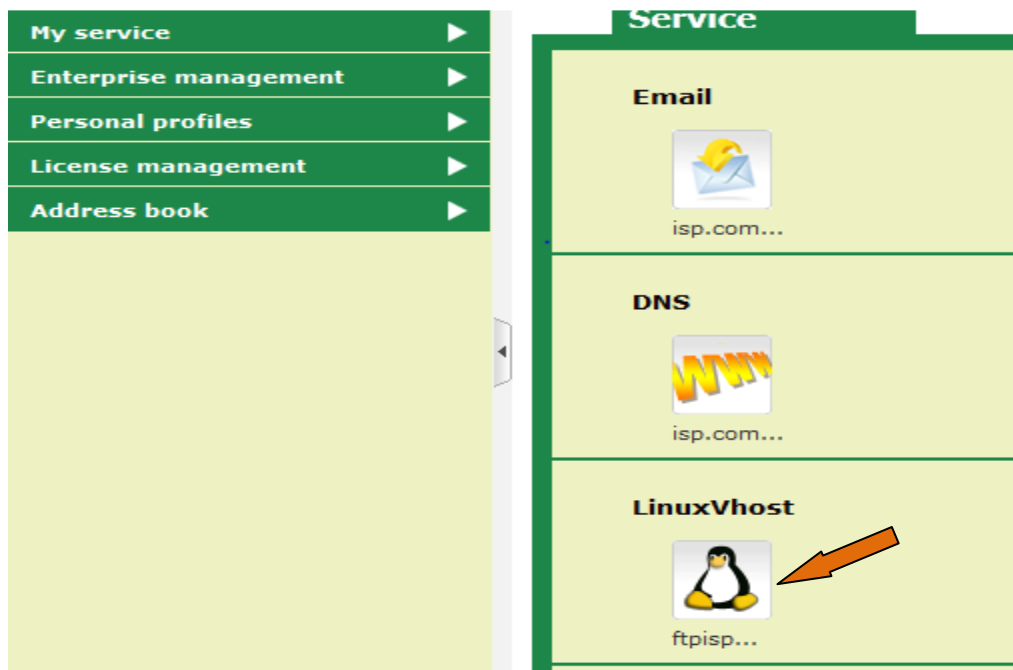
Enterprise account provided to you from Ethio telecom, which includes:

Enterprise account:

Login:

Password:

Step 1: Get your FTP username





Click on the LinuxVhost will come up with the next window

Operation management

[\[Host Information\]](#) [\[FTP Manage\]](#) [\[WEB File Manage\]](#) [\[Modify FTP Password\]](#) [\[View the Space\]](#)

Detailed information of virtual hosting

Web Hosting:	ftpisp
Product Name:	Linux Host 300MB
Disk space:	300 M
IP:	213.55.96.150
OS:	Linux
Script Supported:	HTML PHP CGI
Default File:	default.html, default.htm, index.html, index.htm, def
Binding Domain:	[Change]
Date of open:	2012-12-11
Date of expiry:	2013-12-11
Web status:	Normal --> [Disable]
FTP status:	Normal --> [Disable]
Virtual host status:	Normal

You will see your FTP username here



Change your FTP password

Operation management

[\[Host Information\]](#) [\[FTP Manage\]](#) [\[WEB File Manage\]](#) [\[Modify FTP Password\]](#) [\[View the Space\]](#)

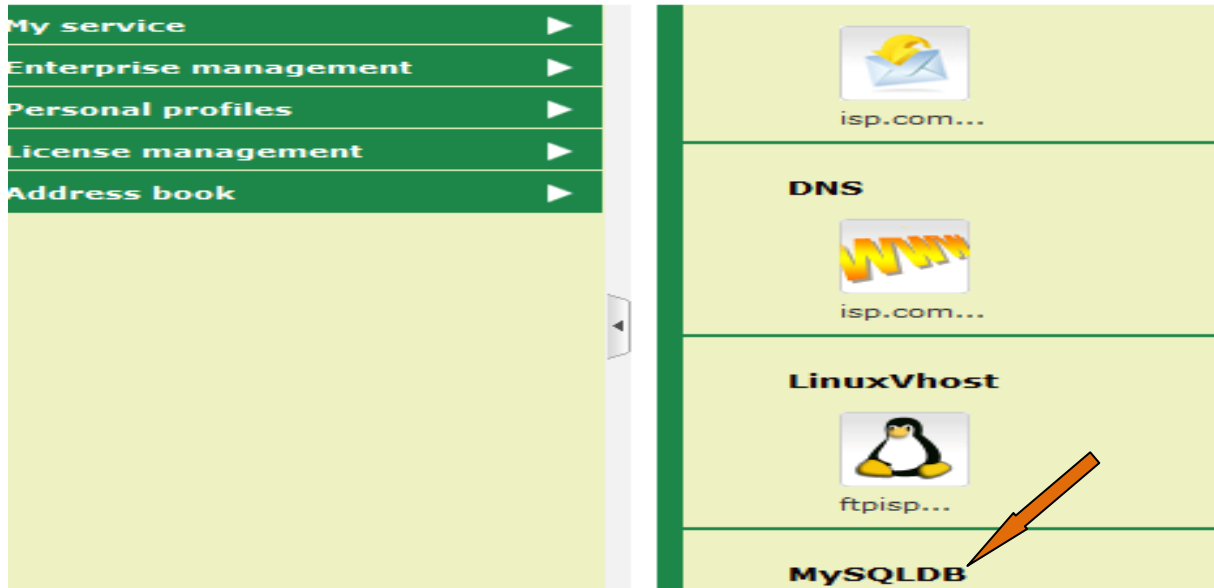
Detailed information of virtual hosting

Web Hosting:	ftpisp
Product Name:	Linux Host 300MB
Disk space:	300 M
IP:	213.55.96.150
OS:	Linux
Script Supported:	HTML PHP CGI
Default File:	default.html, default.htm, index.html, index.htm,def
Binding Domain:	[Change]
Date of open:	2012-12-11
Date of expiry:	2013-12-11
Web status:	Normal --> [Disable]
FTP status:	Normal --> [Disable]
Virtual host status:	Normal

Step 4: Get your Database Name

Click on the **MySQLDB** icon shown below

2013-01-01 11:27:14 test isp administrator



My service ▶
Enterprise management ▶
Personal profiles ▶
License management ▶
Address book ▶

isp.com...
DNS
isp.com...
LinuxVhost
ftpisp...
MySQLDB

Operation management

[Database Brief] [Download Database Export File] [Modify Password] [Database Export] [Database Import] [Execute Sql] [View the Space] [Phpmyadmin]

Detailed Information of Database

Database Name:	ispdb
Database Type:	MYSQL
Product Name:	MySQLDB 100MB
DB Server:	mysql.letisp.et
OS:	Linux
Disk space:	100 M
Date of open:	2012-02-23
Date of expiry:	2013-02-23
Status:	Normal --> [Disable]
FTP status:	Normal --> [Disable]
Database Status:	Normal

You can find your database name here

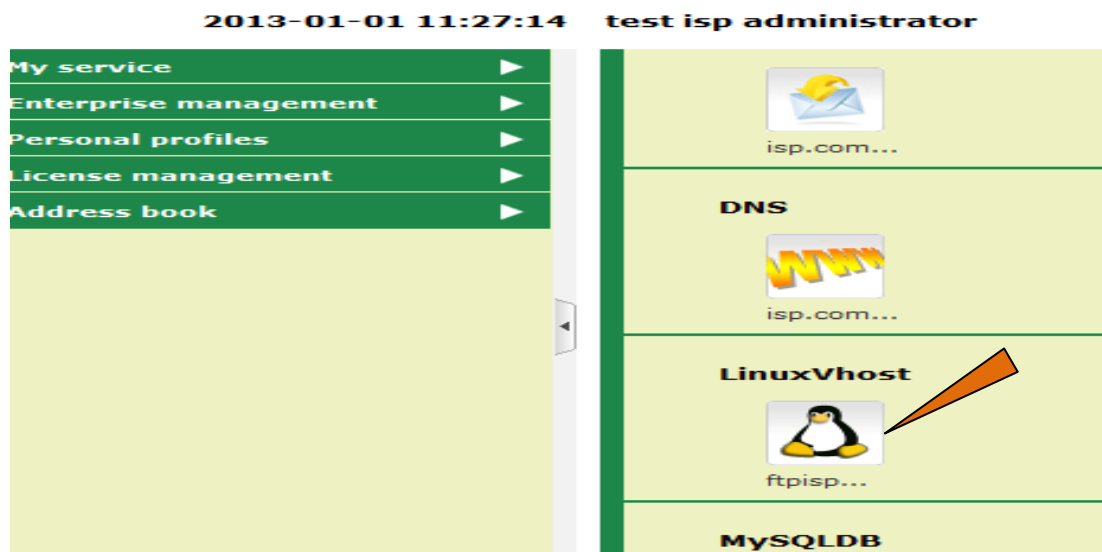
Click on Modify Password as indicated by arrow above to change your database password



Part III: Steps to configure your webhosting

Step 1: Login to <http://portal.ethionet.et>

First login to <http://portal.ethionet.et> using your enterprise account and then click on the webhosting icon (**LinuxVhost** or **WindowsVhost**) as indicated in the picture below



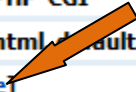
Operation management

[\[Host Information\]](#) [\[FTP Manage\]](#) [\[WEB File Manage\]](#) [\[Modify FTP Password\]](#) [\[View the Space\]](#)

Detailed information of virtual hosting

Web Hosting:	ftpisp
Product Name:	Linux Host 300M
Disk space:	300 M
IP:	213.55.96.150
OS:	Linux
Script Supported:	HTML PHP CGI
Default File:	default.html, default.htm, index.html, index.htm, def
Binding Domain:	[Change]
Date of open:	2012-12-11
Date of expiry:	2013-12-11
Web status:	Normal --> [Disable]
FTP status:	Normal --> [Disable]
Virtual host status:	Normal

This is your hosting public IP address. You will use it to upload your files



While you click on change icon above you will get the next window then fill your full domain name and click on [Add](#) like below picture

Operation Administration

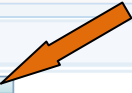
[\[Host Information\]](#) [\[FTP Manage\]](#) [\[WEB File Manage\]](#) [\[Modify FTP Password\]](#) [\[View the Space\]](#)

Binding Domain

Binding Domain

[Add](#)

Enter your domain name here





You come up with this window

Operation management

[\[Host Information\]](#) [\[FTP Manage\]](#) [\[WEB File Manage\]](#) [\[Modify FTP Password\]](#) [\[View the Space\]](#)

Detailed information of virtual hosting

Web Hosting:	ftpisp
Product Name:	Linux Host 300MB
Disk space:	300 M
IP:	213.55.96.150
OS:	Linux
Script Supported:	HTML PHP CGI
Default File:	default.html, default.htm, index.html, index.htm, default
Binding Domain:	www.isp.com.et [Change]
Date of open:	2012-12-11
Date of expiry:	2013-12-11
Web status:	Normal --> [Disable]
FTP status:	Normal --> [Disable]
Virtual host status:	Normal

You will see your domain name here

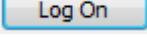
Part IV: Uploading webhosting file

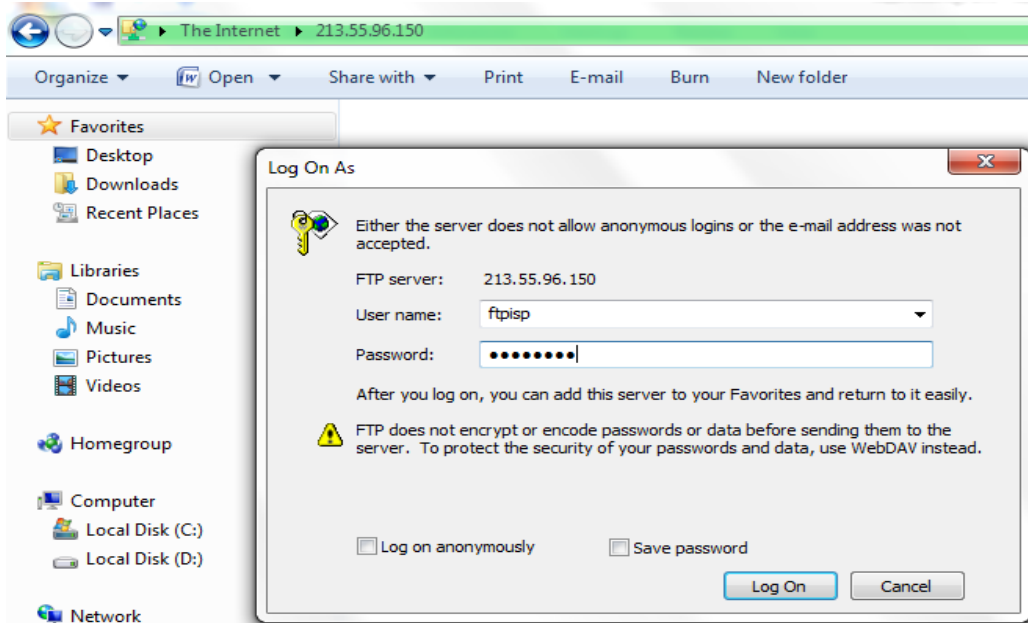
To upload your ftp file you have two options

1. Using windows explorer

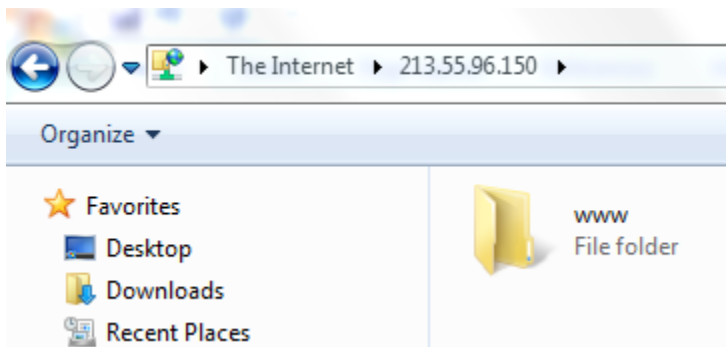
Open windows explorer and type your hosting public IP address as shown below

<ftp://xxx.xx.xx.xxx> For this example, it would be <ftp://213.55.96.149>

Fill your ftp username and password on the prompt that .Then click on  icon as shown below.



After login you will see the www folder as shown below. Open the www folder and delete the existing files



Then copy and paste your files from any drive to **WWW** folder.

Please don't copy paste your file outside of WWW folder just copy paste your file inside the WWW folder



1. Using web file manager

Login to your enterprise account → click on linuxVhost (windowsVhost) icon then click on the web file manage as pictured below

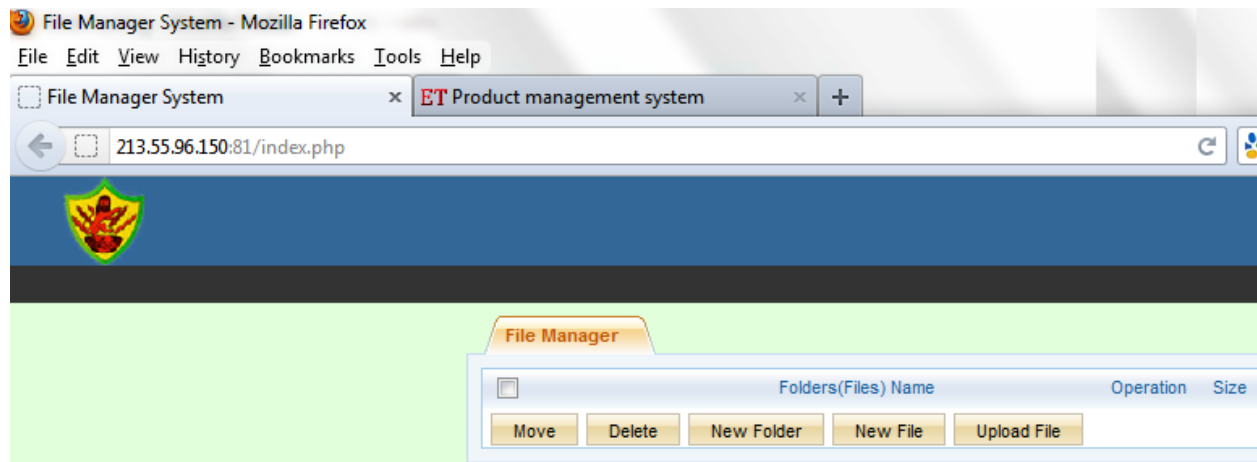
Operation management

[\[Host Information\]](#) [\[FTP Manage\]](#) [\[WEB File Manage\]](#) [\[Modify FTP Password\]](#) [\[View the Space\]](#)

Detailed information of virtual hosting

Web Hosting:	ftpisp
Product Name:	Linux Host 300MB
Disk space:	300 M
IP:	213.55.96.150
OS:	Linux
Script Supported:	HTML PHP CGI
Default File:	default.html, default.htm, index.html, index.htm, def
Binding Domain:	www.isp.com.et [Change]
Date of open:	2012-12-11
Date of expiry:	2013-12-11
Web status:	Normal --> [Disable]
FTP status:	Normal --> [Disable]
Virtual host status:	Normal

You will get the next picture



Then you can upload your file your file by clicking on the **Upload File** icon.

Part V: Modify your configuration.php file

Modify your configuration.php file as follows

```
public $dbtype = 'mysql';  
public $host = 'mysql.etisp.et';  
public $user = 'your database username';  
public $password = 'your database password';  
public $db = 'your database username';
```

Part V: Uploading Your Database

Step 1: login in to <http://portal.ethionet.et> using your enterprise account

Step 2: Click on the mysql database icon **MySQLDB**

Step 3: Click on the **[Phpmyadmin]** icon. It will prompt you your user name password like the below

Welcome to phpMyAdmin

Language

English ▼


Log in 

Username:

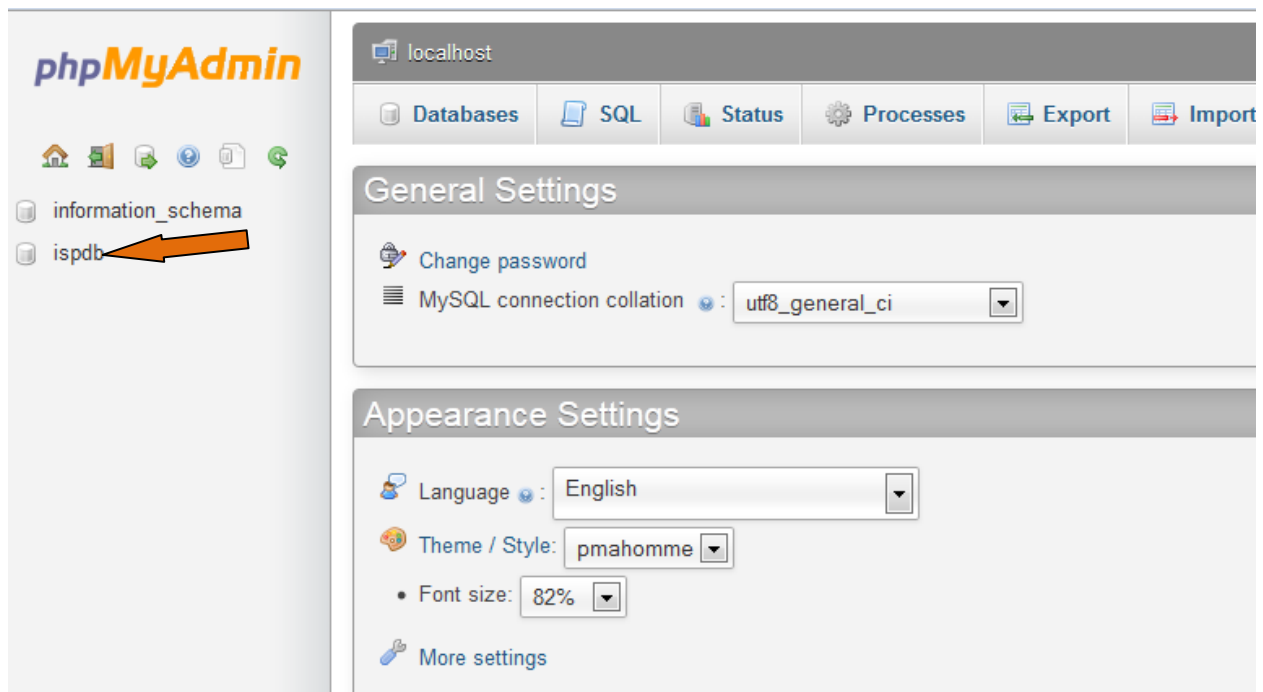
Password:

Go

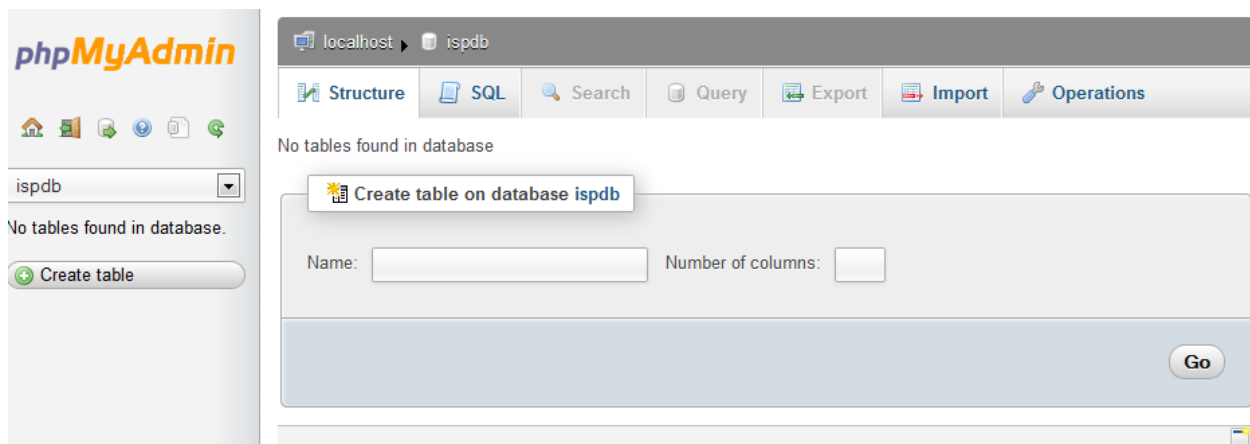
Enter your database username and password here



Then click on  icon you will see the following picture


Then click on your database name as indicated with arrow




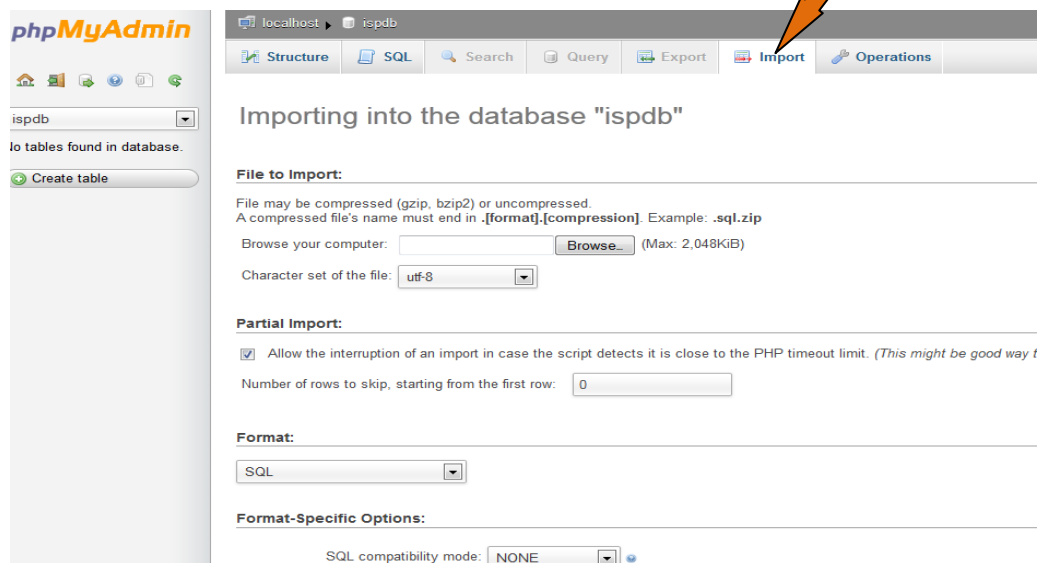
You will get the following picture



To upload your database file you have two options. The first one is using the  **Import** tool. And the second one is using the  **SQL** tool.

A. Using  **Import** to upload database file

Click on Import  **Import** and you will see the following picture




Please note that before importing your file you should compress it using **.gzip** or **.bzip2** extension

Click on the  icon to upload your file.

Please make sure that your database file should be not more than 2M. If it is beyond, please divide your file into pieces then upload part by part.


Then click on  icon to start the upload.

B. Using  icon to upload database file

Click on this  icon you will get the following textbox
Copy and paste your SQL code

localhost ▶ ispdb

Structure SQL Search Query Export Import Operations

Run SQL query/queries on database ispdb: 

```
|
```

Clear

[Delimiter :] Show this query here again

Then click on



Before you upload using this scenario make sure that you remove the following parts from your SQL

```
-- phpMyAdmin SQL Dump
-- version 3.2.4
-- http://www.phpmyadmin.net
--
-- Host: localhost
-- Generation Time: Dec 09, 2012 at 01:22 PM
-- Server version: 5.1.41
-- PHP Version: 5.3.1

SET SQL_MODE="NO_AUTO_VALUE_ON_ZERO";

/*!40101 SET @OLD_CHARACTER_SET_CLIENT=@@CHARACTER_SET_CLIENT */;
/*!40101 SET @OLD_CHARACTER_SET_RESULTS=@@CHARACTER_SET_RESULTS
*/;
/*!40101 SET @OLD_COLLATION_CONNECTION=@@COLLATION_CONNECTION */;
/*!40101 SET NAMES utf8 */;

--
-- Database: `ispdb`
--
-- CREATE DATABASE `ispdb` DEFAULT CHARACTER SET utf8 COLLATE --
utf8_general_ci;
-- USE `ispdb`;

-----

--
-- Table structure for table `tblisp_accordingallery`
--
```

Finally you will see the following result

Table	Rows	Type	Collation	Size	Overhead
bak_assets	159	InnoDB	utf8_general_ci	96.0 KiB	-
bak_banners	3	InnoDB	utf8_general_ci	96.0 KiB	-
bak_banner_clients	1	InnoDB	utf8_general_ci	48.0 KiB	-
bak_banner_tracks	0	InnoDB	utf8_general_ci	64.0 KiB	-
bak_categories	67	InnoDB	utf8_general_ci	176.0 KiB	-
bak_contact_details	8	InnoDB	utf8_general_ci	144.0 KiB	-
bak_content	66	InnoDB	utf8_general_ci	256.0 KiB	-
bak_content_frontpage	4	InnoDB	utf8_general_ci	16.0 KiB	-
bak_content_rating	0	InnoDB	utf8_general_ci	16.0 KiB	-
bak_core_log_searches	0	InnoDB	utf8_general_ci	16.0 KiB	-
bak_extensions	109	InnoDB	utf8_general_ci	96.0 KiB	-
bak_languages	1	InnoDB	utf8_general_ci	32.0 KiB	-
bak_menu	139	InnoDB	utf8_general_ci	256.0 KiB	-
bak_menu_types	6	InnoDB	utf8_general_ci	32.0 KiB	-
bak_messages	0	InnoDB	utf8_general_ci	32.0 KiB	-
bak_messages_cfg	0	InnoDB	utf8_general_ci	16.0 KiB	-
bak_modules	61	InnoDB	utf8_general_ci	96.0 KiB	-
bak_modules_menu	156	InnoDB	utf8_general_ci	16.0 KiB	-
bak_newsfeeds	4	InnoDB	utf8_general_ci	128.0 KiB	-
bak_redirect_links	0	InnoDB	utf8_general_ci	48.0 KiB	-